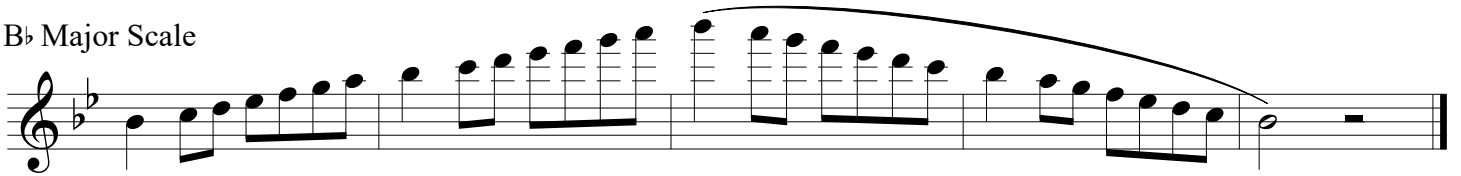


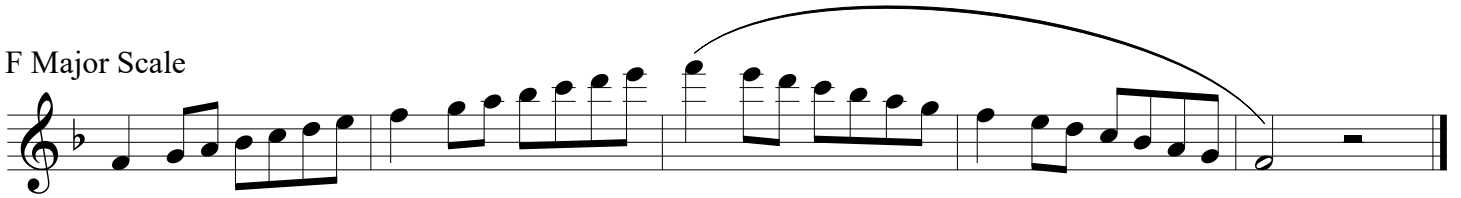
# Region 25 Middle School All-Region Scales

Flute

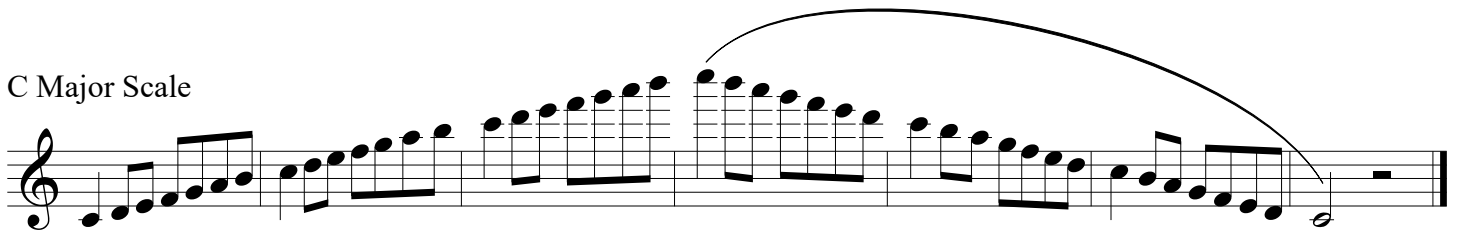
B $\flat$  Major Scale



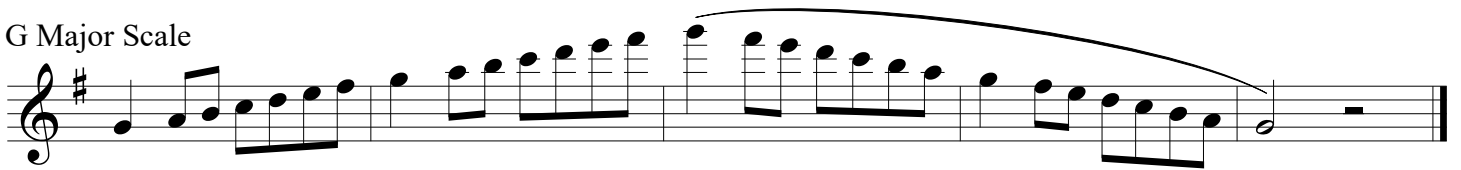
F Major Scale



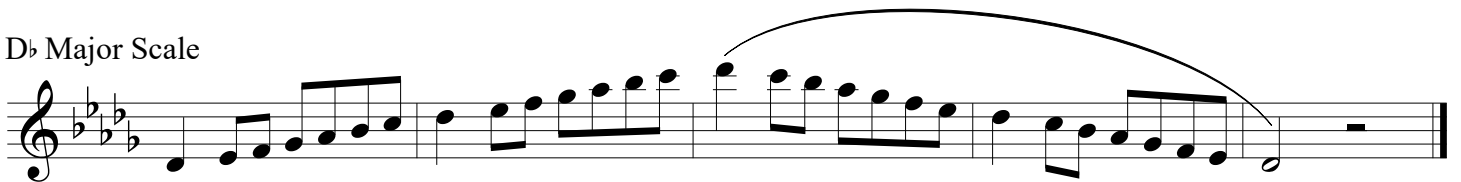
C Major Scale



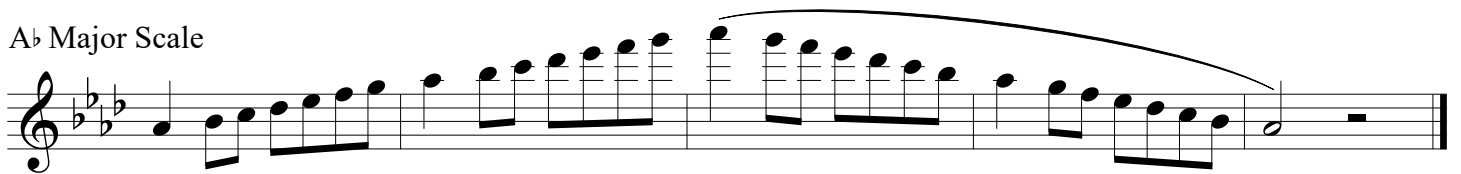
G Major Scale



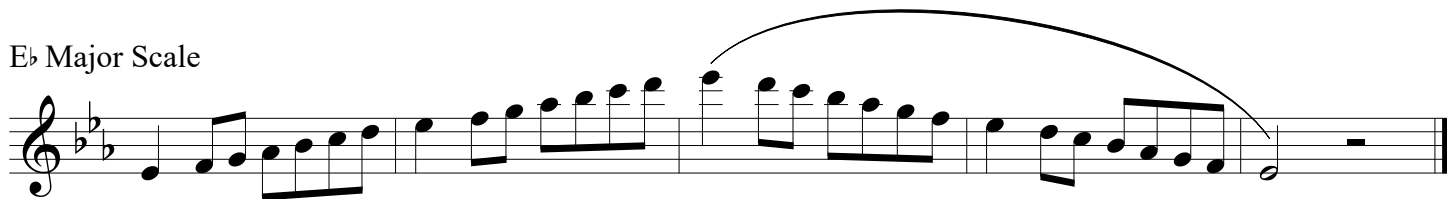
D $\flat$  Major Scale



A $\flat$  Major Scale

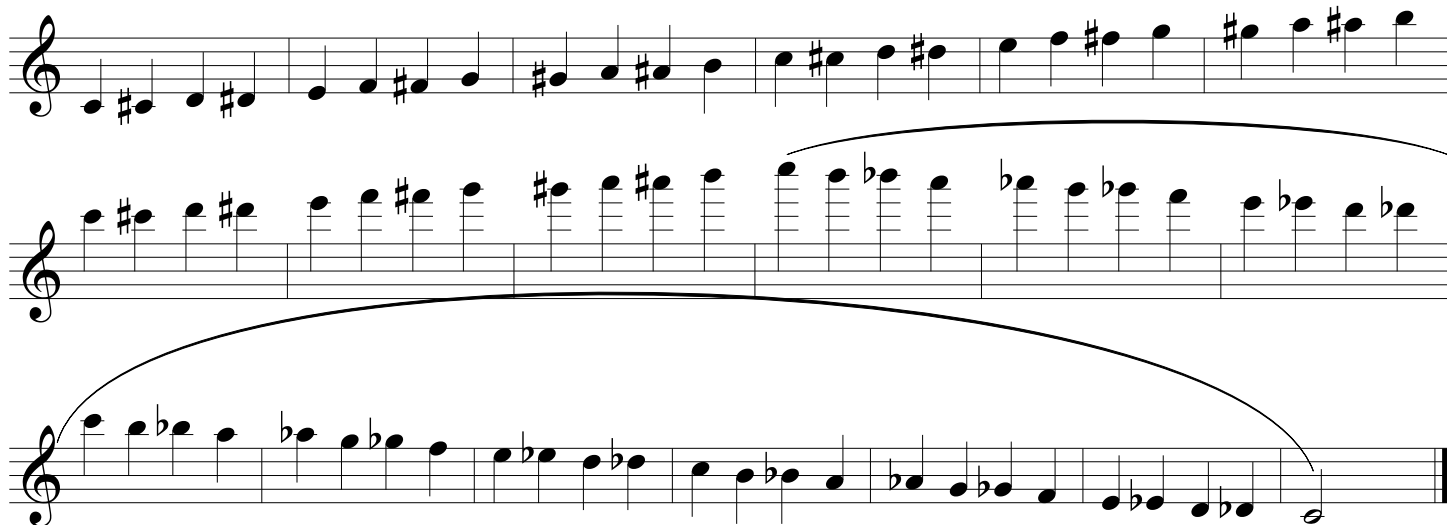


E $\flat$  Major Scale



Musical notation for the E $\flat$  Major Scale in treble clef. The scale is written on a single staff. It begins with a treble clef and a key signature of two flats (B $\flat$  and E $\flat$ ). The notes are: E $\flat$ , F, G, A, B $\flat$ , C, D, E $\flat$ , F, G, A, B $\flat$ , C, D, E $\flat$ . The first five notes (E $\flat$  to C) are beamed together. The next five notes (D to E $\flat$ ) are also beamed together. A slur is placed over the final three notes (C, D, E $\flat$ ).

C-C Chromatic



Musical notation for the C-C Chromatic scale in treble clef. The scale is written on three staves. The first staff contains the first six notes of the ascending scale: C, C $\sharp$ , D, D $\sharp$ , E, E $\sharp$ . The second staff contains the next six notes: F, F $\sharp$ , G, G $\sharp$ , A, A $\sharp$ . The third staff contains the final six notes of the ascending scale: B, B $\sharp$ , C, C $\flat$ , B $\flat$ , A $\flat$ , G $\flat$ , F $\flat$ , E $\flat$ , D $\flat$ , C $\flat$ . The notes are beamed in groups of six. A slur is placed over the final six notes of the ascending scale (B to C).